

CASE STUDY



**ASSET
LOCATION**

**FIXED PLATFORM
NORTH SEA**

**TEAM
DURATION**

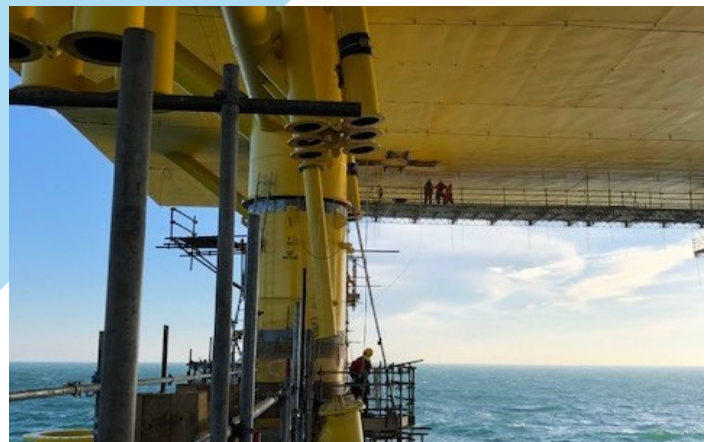
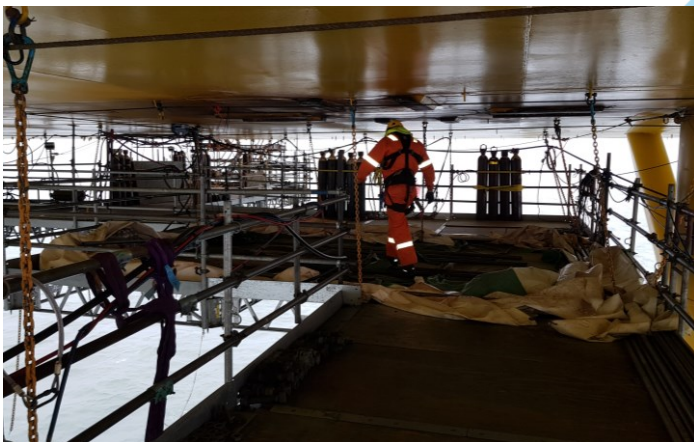
**12 PERSON
12 MONTHS**

PROJECT OVERVIEW

Hook-up and commissioning of a High Voltage Direct Current (HVDC) substation in the German sector of the North Sea. Turnkey construction services, rigging and lifting, electrical and instrumentation installation and commissioning, fabric maintenance, temporary access solutions.

SCOPE OF WORK

- Hook up of caissons and J-tubes
- Insulation, coatings and HVAC repairs
- Installation and fault identification of electrical systems
- Removal of transportation steel and temporary boat landing platform
- Installation of CCTV cameras
- Work pack and LOLER lift plans development
- Welding repairs and ad-hoc fabrication activities
- Design and supply of suitable underdeck access solution



CLIENT CHALLENGES

- No laydown area or underdeck access to support critical path worksopes
- Multiple simultaneous scopes of work imposed significant scheduling constraints
- Scope of work not fully defined from project outset, resulting in multiple changes during execution
- Limited bed space onboard the platform
- Complex rigging and lifting required to hook up caissons and J-tubes

AQUATERRA SOLUTIONS

- Design, supply and installation of QuikDeck® underdeck access platform
- Temporary cantilevered laydown area constructed to facilitate transfer of equipment
- Formal, regular communications and information streams with all interested parties
- Small, independent teams of competent, multi-disciplined personnel providing flexibility
- Access technologies to deliver cost savings
- Smart project scheduling to prioritise critical path tasks and minimise equipment mobilisation
- Fabrication yard installation of access platform to reduce offshore time and costs
- Specialist rigging teams to transfer spool pieces to underdeck and remove of boat landing platform

ADDED VALUE

- ✓ Cost management – minimising non-productive time, maximizing productivity
- ✓ Motivated people – investment in skills, positive attitudes and behaviours
- ✓ Fallback work – alternative scopes to ensure maximum productivity
- ✓ Safety commitment – cultural, demonstrable, positive behaviours
- ✓ Safe working – 60000 hours zero LTI's/FA's
- ✓ Quality assured – backed by multiple business and service accreditations
- ✓ Equipment – AquaTerra owned, managed, assured

